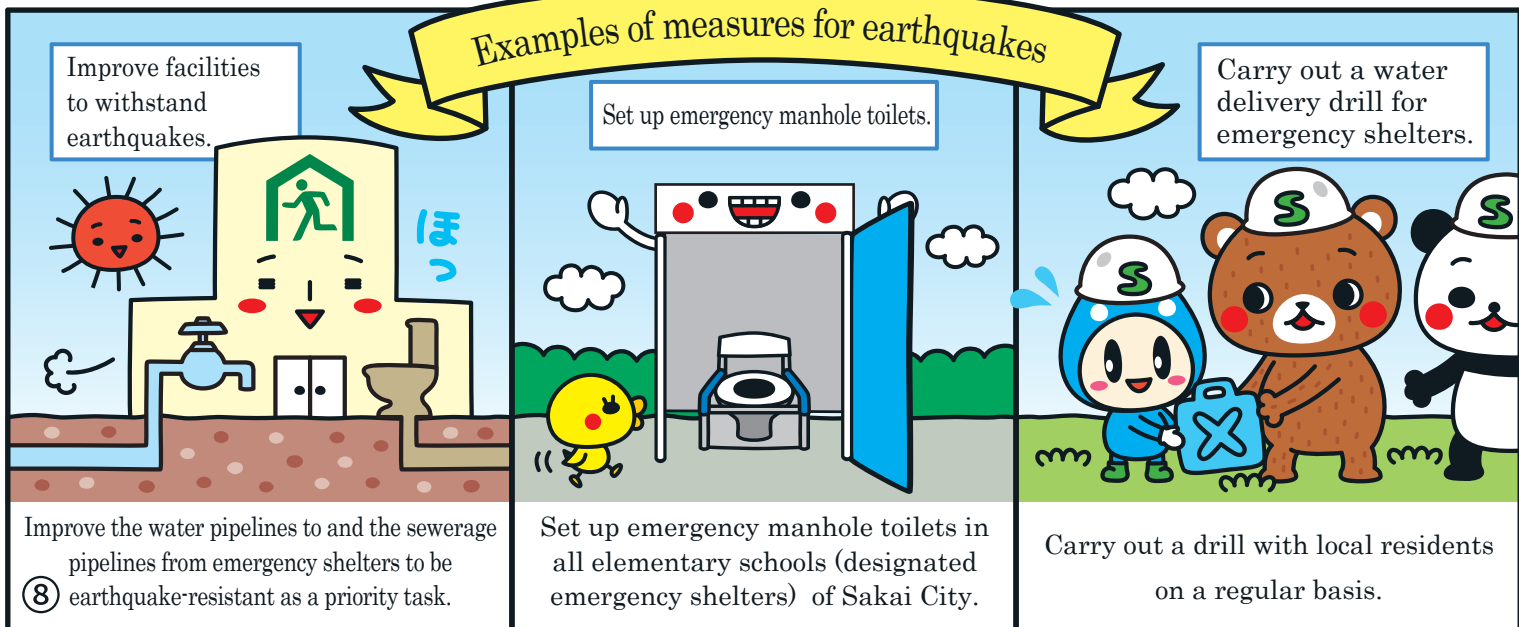
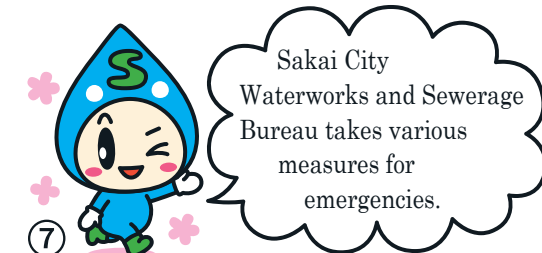
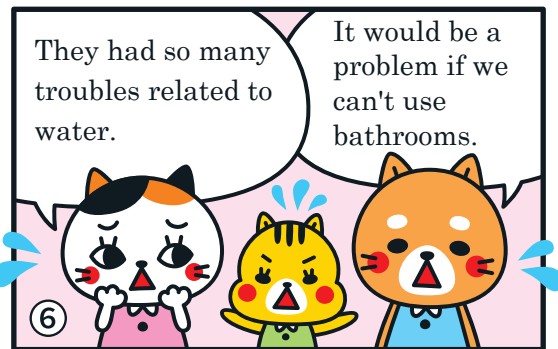
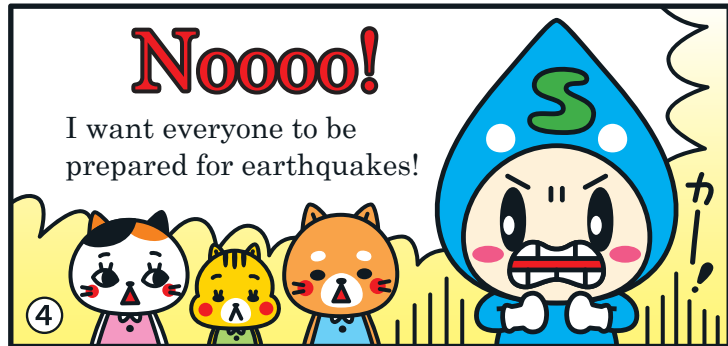
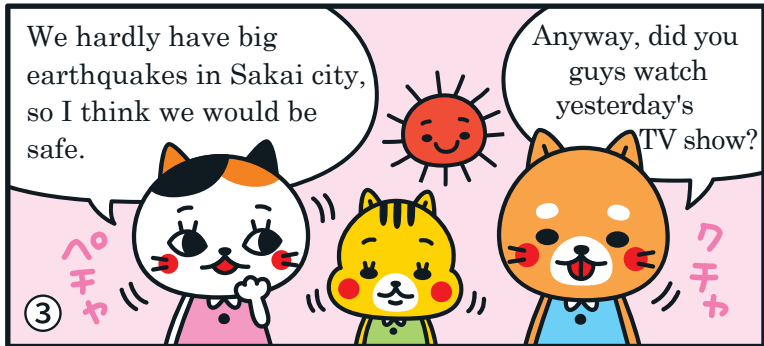
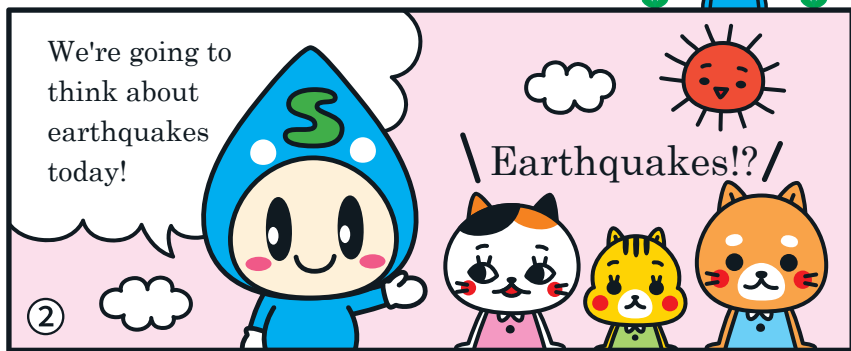
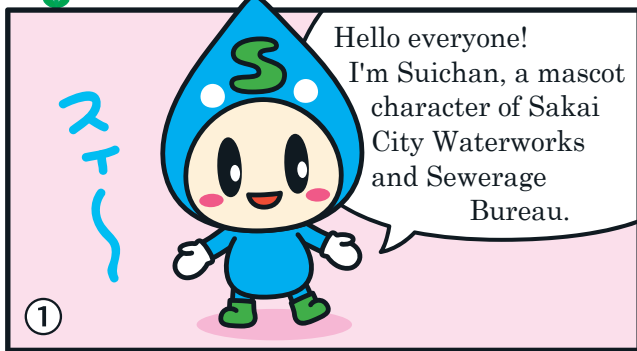
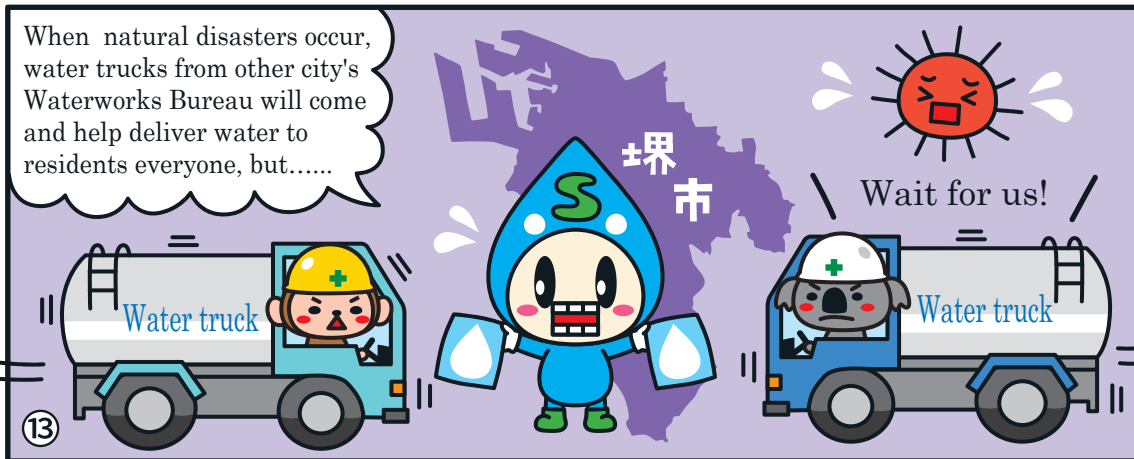
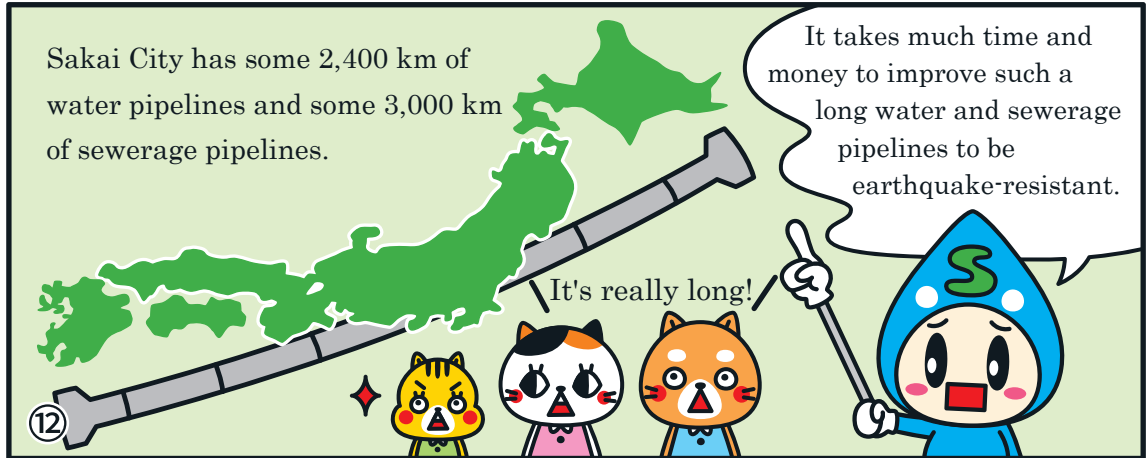
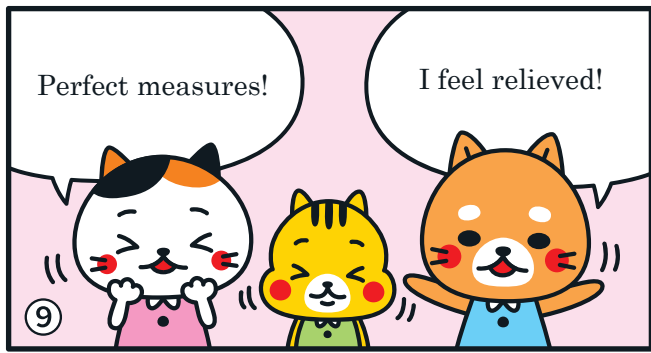


Learn about water supply and sewerage in a fun way!

We want you to be prepared for earthquakes.

え・西村軍団







We want you to know about toilet issues in the event of an earthquake. 元・西村軍団

1 Hello! I'm Suichan, a mascot character of Sakai City Waterworks and Sewerage Bureau.

2 Assume that an earthquake has occurred and you can't use water. What would you do if you were urged to go to the bathroom?

3 We can use the bathroom at home as usual, right? Water doesn't come out, so maybe we can't, can we? Mmmmm....

4 Oh, yes! Why don't we use temporary bathrooms like we see in fireworks event sites?

5 It takes at least few days to set up temporary bathrooms.

6 The images of bathroom at the time of earthquake

It not only takes time to set up. A number of serious problems occurred with the bathrooms at emergency shelters and home as well.

Only few bathrooms are set up and they are all crowded.

Really far

Unsanitary Smell bad

We don't want to go to such bathrooms!

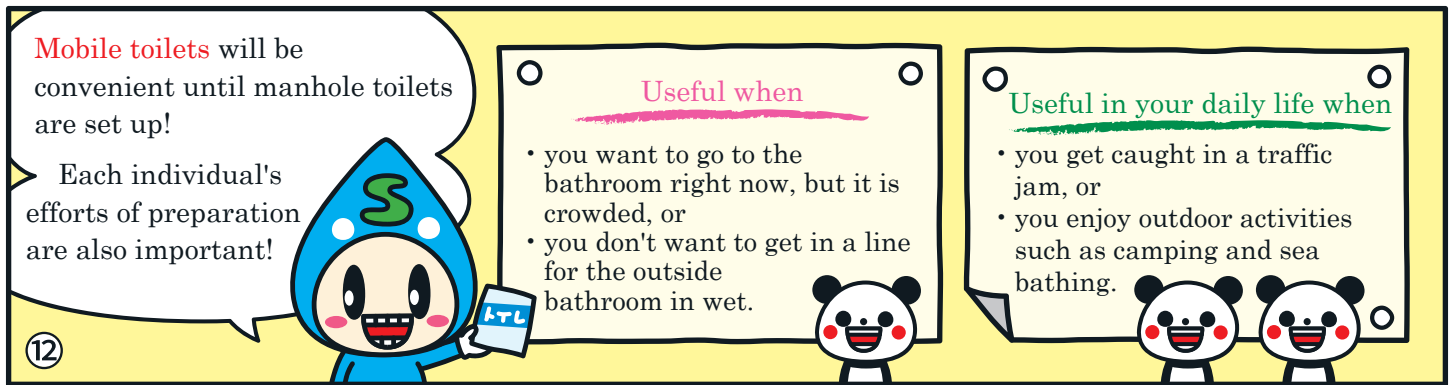
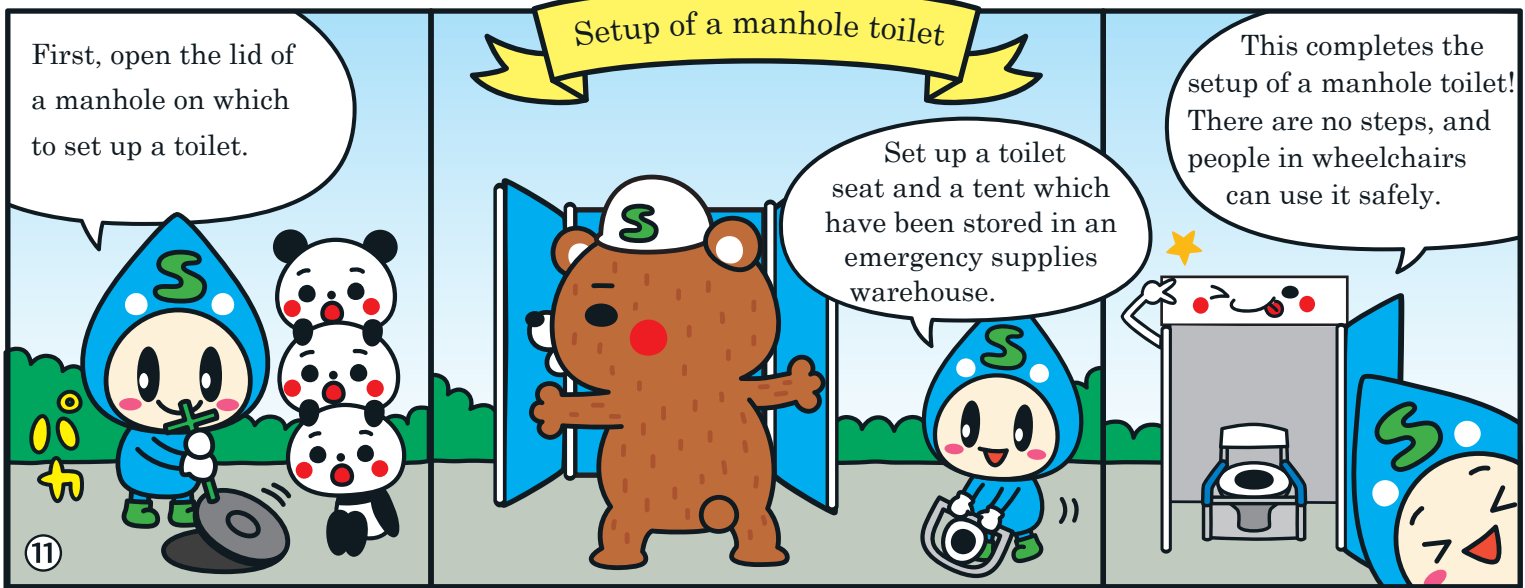
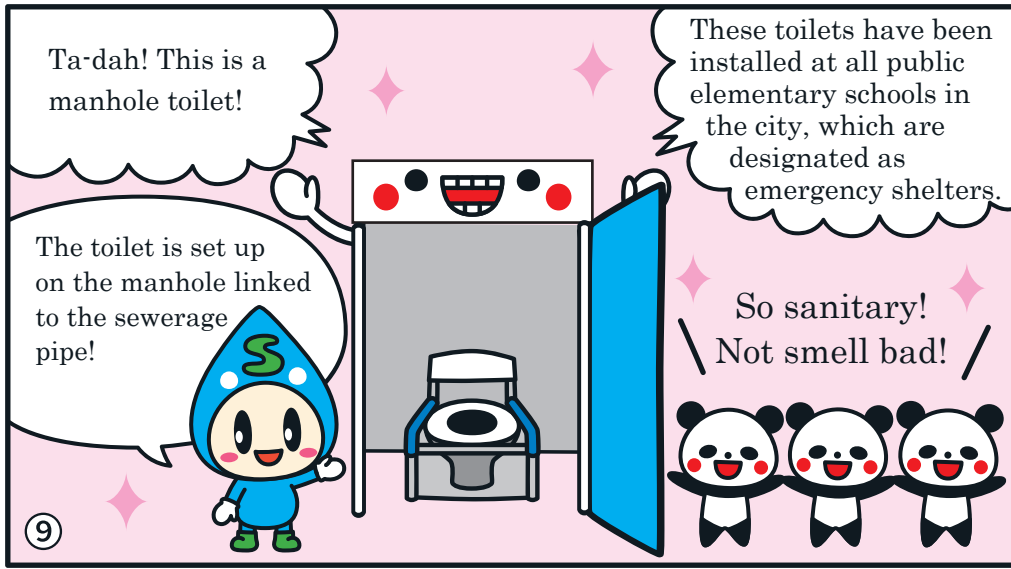
We might as well reduce eating and drinking, and hold our water. We're going to become sick...

7 We asked at the emergency shelters "What do you need right now?" The bathroom comes at a high rank.

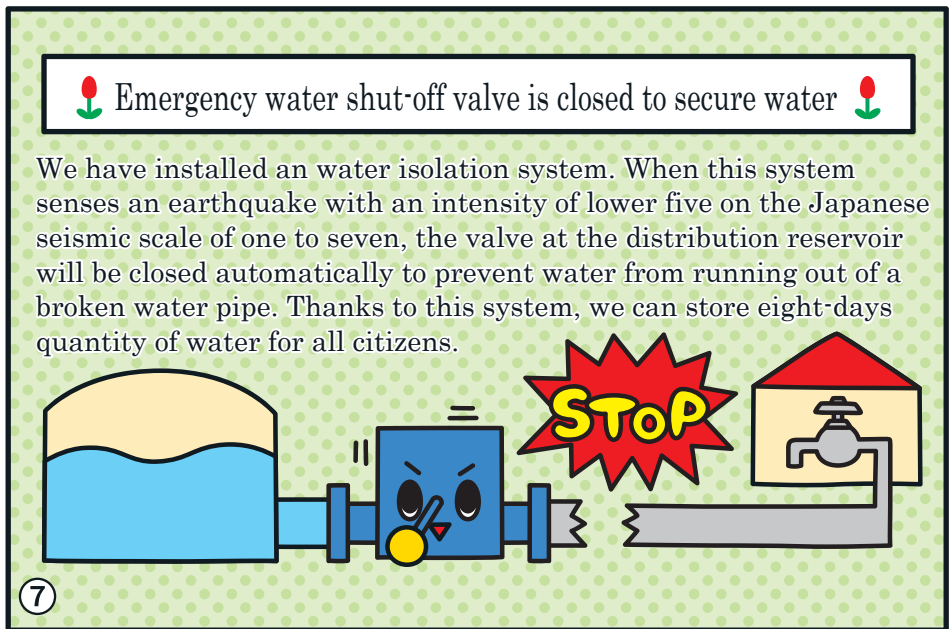
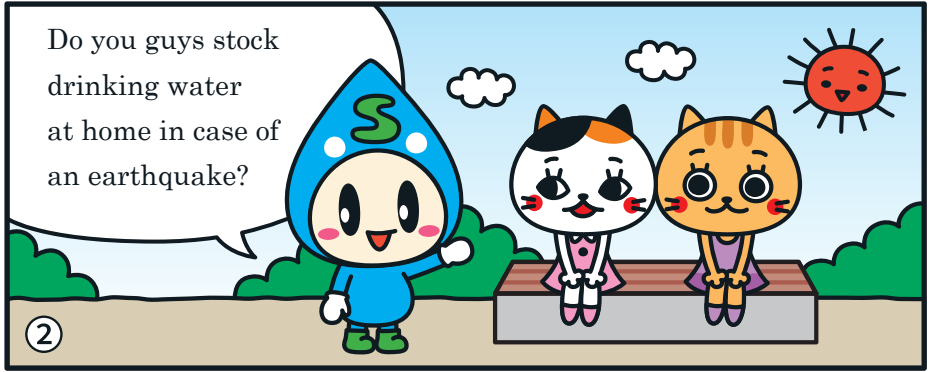
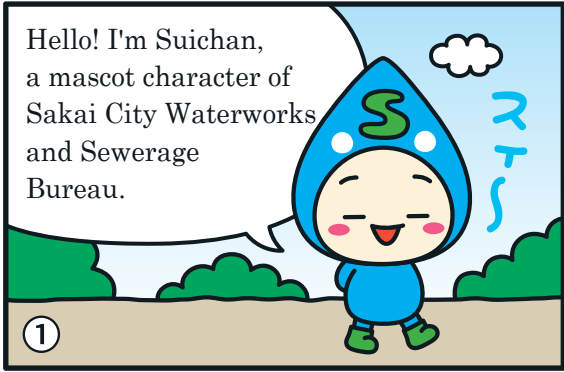
After an earthquake	3 days later	4 days later	5 days later
1st place	Mobile toilets	Mobile toilets	Underwears
2nd place	Blankets	Underwears	Medicines
3rd place	Medicines	Medicines	Mobile toilets

8 So, Sakai City Waterworks and Sewerage Bureau have been installing emergency manhole toilets to be prepared for earthquakes.

Emergency manhole toilets?



Can we use the tap water in the event of an earthquake? 元・西村軍団



🌸 Deliver water by water trucks 🌸

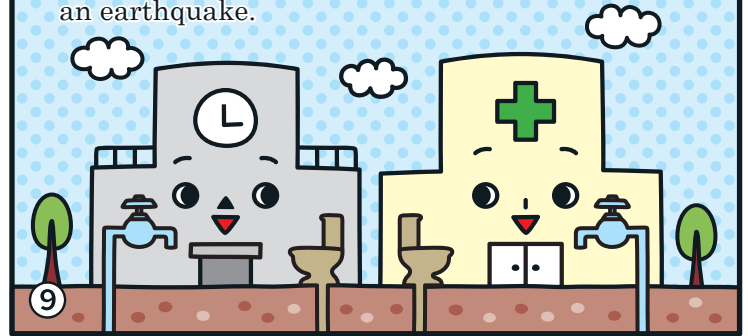
We deliver water with top priority to hospitals which have people's lives in their hand. A few days after the earthquake when other cities' help has arrived, we will deliver water to elementary and junior high schools that are designated as emergency shelters.



8

🌸 Improve water pipes to be earthquake-resistant 🌸

Water pipelines to hospitals and designated emergency shelters have been improved to be earthquake-resistant on a priority basis, so they are not likely to be broken in the event of an earthquake.



9

And, the bench on which you are seated now has a secret!



10

This is the same bench as is installed in each of your elementary schools. It is called "A Surprise Tap of Suichan." Inside, it contains pieces of items to set up water taps.



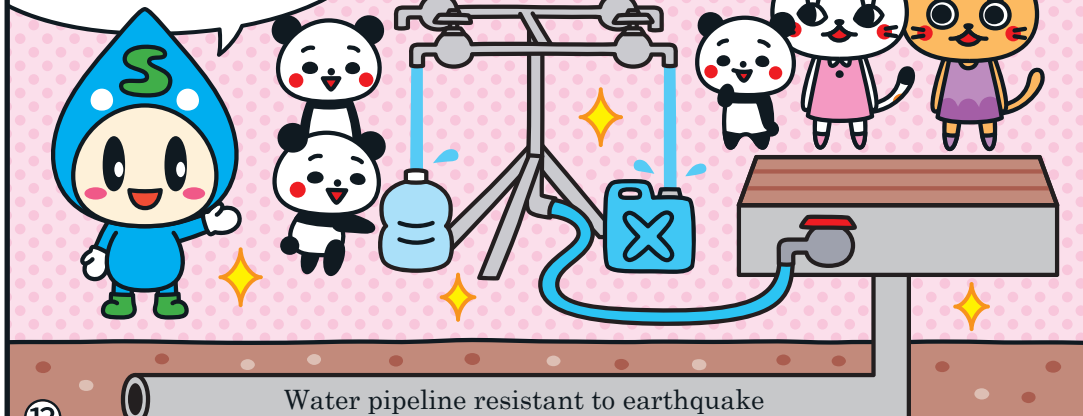
11

Oh my gosh! We didn't know that!



It's easy to set up! We've been training at local emergency drills so that anyone can set up.

With this, we need not worry about water supply if buildings are collapsed.



12

It is also advisable to decide with your family members in advance where to take shelter and how to contact each other in the event of an earthquake. You can find a lot of useful and helpful information on our website.



13